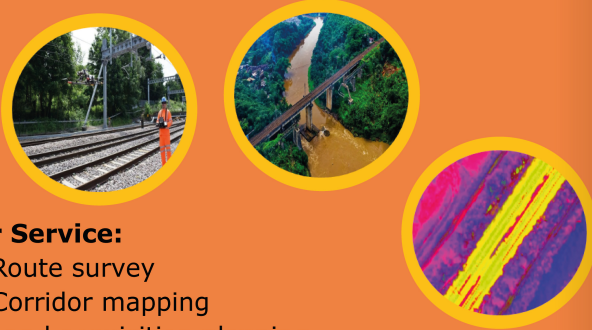


## Railway Sector



### Our Service:

- Route survey
- Corridor mapping
- Land acquisition planning
- Measure earthwork and soil accurately
- Track progress with a bird's-eye view
- Basic track componentry inspection
- Complex track componentry inspection
- Monitoring & Maintenance

## Roads and Highway Sector



### Our Service:

- Route survey
- Corridor mapping
- Land acquisition planning
- Measure earthwork and soil accurately
- Track progress with a bird's-eye view
- Inspection of existing roads and highways
- Environmental assessment
- Pavement conditions and road distress monitoring

### Benefits of using Drone:

- Fast, reproducible, on-demand image acquisition
- Accurate and comprehensive data
- Cost and time saving
- Better documentation and faster reconciliation
- Better access to remote location



### WHY CHOOSE US?

We provide fully licensed state of the art drone services to our clients. Our expert pilots are highly experienced in flying drones and aerial photogrammetry.

Our aerial drones can capture all types of survey information which is more advanced, more efficient, enough time saving and centimeter level accurate.

For further information:

**Email:** [info@etcblglobal.com](mailto:info@etcblglobal.com);

**Website:** [www.etcblglobal.com](http://www.etcblglobal.com)

**LinkedIn:** [www.linkedin.com/company/etcblglobal](http://www.linkedin.com/company/etcblglobal)

**Address:** Flat: A1, House:12/28, Sir Syed Road, Bloack-A, Mohammadpur, Dhaka-1207, Bangladesh



etcbl global



**HOTLINE**

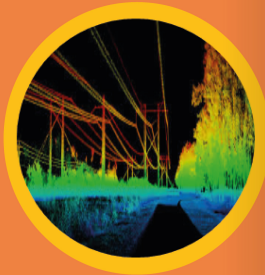
**+8801671 321158**

**Aerial Survey  
Using Remote Drones**

## Power Sector

### Our Service:

- Corridor mapping of power line networks
- Aerial transmission line surveys
- Land acquisition planning
- LiDaR survey (upcoming)
- Power line inspection
- Substation static line inspection
- HD video and high resolution photography



## Water Sector

### Our Service:

- Mapping
- Survey (River & Canal)
- Land acquisition planning
- Track progress with a bird's-eye view
- River embankment inspection
- Environmental assessment
- Monitor river direction
- Monitoring river morphology
- Monitor riverbank erosion



## Local Government Sector

### Our Service:

- Mapping
- Field survey
- Land acquisition planning
- Measure earthwork and soil accurately
- Track progress with a bird's-eye view
- Inspection of existing roads and bridges
- Environmental assessment
- Pavement conditions and road distress monitoring



etcbl global

